

■ Walt Disney's Comics and Stories – Vol. 5 No. 10 (July 1945)

Summary of Observations

This comic is **structurally incomplete**, with the **entire back cover missing** and the book terminating at the final interior contents page. Structural damage is extensive and concentrated along the spine, centerfold, and lower front cover edge. The spine has suffered **severe tear-out and material loss**, leaving large portions of original spine paper absent and inner wraps exposed. Damage patterns indicate progressive tearing rather than repair or reinforcement. Examination of the fastener system confirms that the **upper staple is missing due to tear-out**, while the **lower staple was never installed**, indicating original single-staple manufacture.

The interior pages and centerfold exhibit **measured, full-thickness tears that materially affect page integrity**. The centerfold remains attached but is compromised by a **large lower-center tear measuring approximately 3.0 inches (76 mm)** extending into the content area, along with a **secondary vertical tear of approximately 11 mm** on one centerfold page. Additional interior sheets show **distinct measured tears**, including a **22 mm jagged margin tear** and a **9 mm vertical tear** near an inner margin. These defects are separate from generalized edge wear and represent true structural breaks in the paper.

Paper condition throughout reflects **advanced mid-1940s newsprint aging**, including oxidation, margin foxing, surface abrasion, creasing, and stiffness. Despite this, artwork and text remain legible, color remains present though muted, and controlled flex testing confirms the paper has **not yet reached full brittleness**. The absence of the back cover, combined with staple failure and extensive tearing, defines the overall condition profile of the book.

Front Cover — Observations (IMG_1401)

Walt Disney's Comics and Stories – Vol. 5 No. 10 (July 1945)

Photo Condition & Quality

High-resolution, evenly lit image showing the full cover, all edges, corners, and the entire spine height. Tears, abrasion, and paper loss are clearly visible.

No. 58

WALT DISNEY'S COMICS

JULY
1945
Vol. 5 No. 10
AND
STORIES
10¢

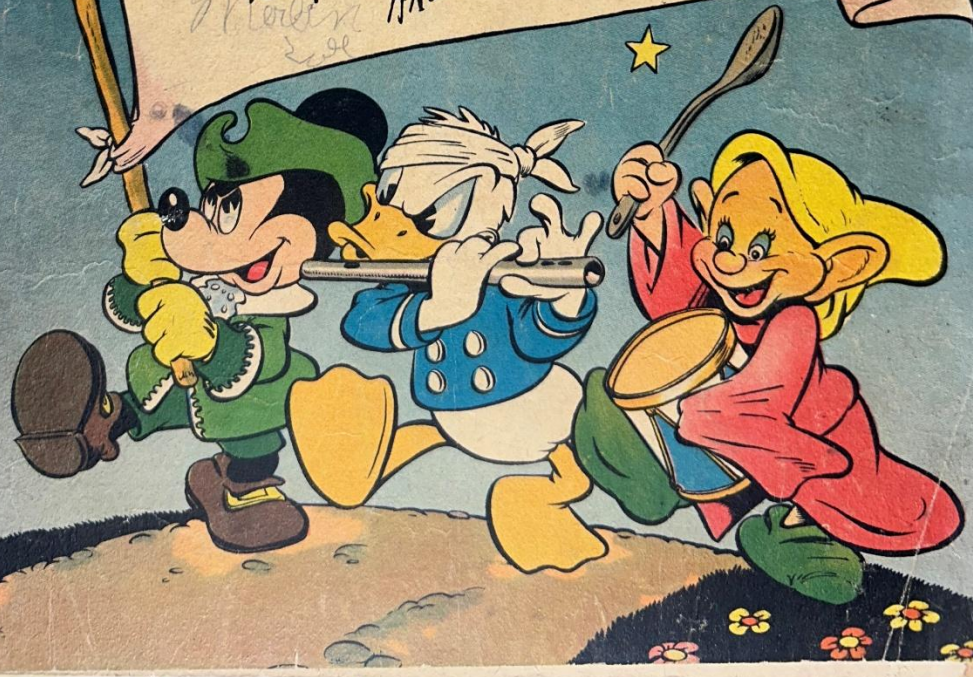
TO THE AMERICAN PEOPLE

Your sons, husbands and brothers who are standing today upon the battlefronts are fighting for more than victory in war. They are fighting for a new world of freedom and peace.

We, upon whom has been placed the responsibility of leading the American forces, appeal to you with all possible earnestness to invest in War Bonds to the fullest extent of your capacity.

Give us not only the needed implements of war, but the assurance and backing of a united people so necessary to hasten the victory and speed the return of your fighting men.

W. Churchill *William H. Leahy*
Dwight D. Eisenhower *Erving*
Arthur Hays Sulzberger *W. M. ...*
Arthur ...



Scene & Composition

A patriotic cover depicts Mickey Mouse, Donald Duck, and José Carioca marching beneath a scroll addressed "To the American People," featuring reproduced signatures. Yellow stars appear on a blue background. The masthead *Walt Disney's Comics and Stories* is prominent, with issue text **July 1945 – Vol. 5 No. 10 – 10¢**.

Findings

- **Severe spine deterioration caused by tear-out and paper loss (no tape present)**; original spine stock largely absent with overlapping, irregular torn paper flaps.
- **Irregular tear at the lower spine corner measuring approximately 1.75 in (44 mm)**, extending upward from the bottom edge into the spine area.
- **Additional bottom-edge tears**, including one measuring approximately **18 mm** near the center bottom and another measuring approximately **12 mm** near the lower right.
- **Vertical crease approximately 5.0 in (127 mm)** running parallel to the spine through the blue field.
- **Heavy surface abrasion** across the blue background with visible ink loss.
- **Corner rounding and softening**, most pronounced at the lower corners.

Color & Printing Quality

Blue field remains visible but uneven due to abrasion; lettering and outlines remain intact and legible.

Paper & Structural Notes

Advanced oxidation along edges. Structural stability at the spine is compromised due to tear propagation and loss of original material.

Overall Impression

Front cover remains visually identifiable but is **structurally weakened by extensive spine tearing and lower-edge losses**.

Back Cover — Observations

Walt Disney's Comics and Stories – Vol. 5 No. 10 (July 1945)

Photo Condition & Quality

No back cover image provided because **the back cover is missing from the comic.**

Findings

- **Back cover is completely absent.**
- The book terminates at an interior contents page (IMG_1402).
- No exterior rear cover stock is present in the photo set.
- Spine and fold images show no rear cover wrap or terminal cover layer.

Overall Impression

The comic is **structurally incomplete due to the missing back cover**, representing a major condition defect.

Interior Pages — Observations (IMG_1402–IMG_1405)

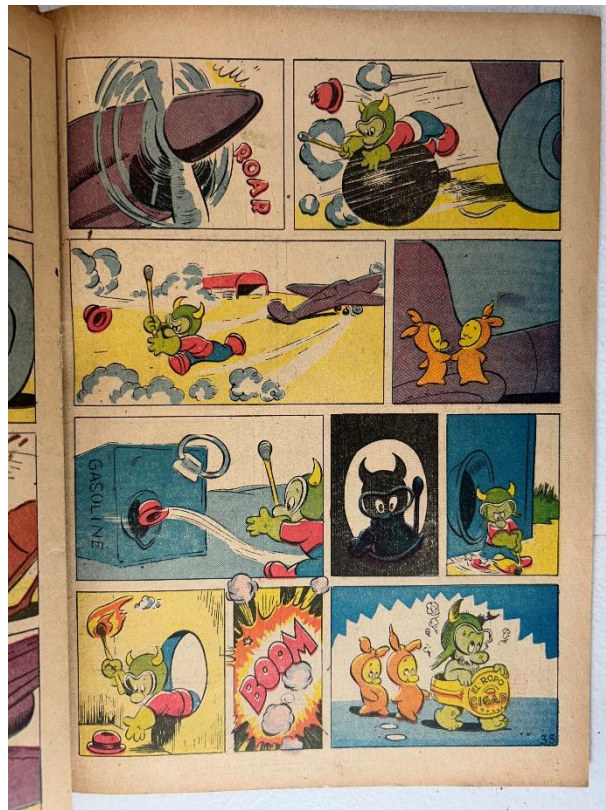
Walt Disney's Comics and Stories – Vol. 5 No. 10 (July 1945)

Photo Condition & Quality

Interior pages photographed clearly with full margins, gutters, and bottom edges visible.

Page Color

Tan to medium brown.



Findings

- **Interior Page A (IMG_1403 – Gremlins)**
 - **Jagged tear along the lower outer margin measuring approximately 22 mm,** with irregular edges and visible fiber separation.
- **Interior Page B (IMG_1404 – Gremlins)**
 - No full-thickness tears observed; minor edge nicks present.
- **Interior Page C (IMG_1405 – Mickey Mouse “Love Trouble”)**
 - **Small vertical tear near the lower inner margin measuring approximately 9 mm,** extending upward from the bottom edge.
- **IMG_1402**
 - This page is the **final interior contents page**, not a back cover.
- **Additional Conditions**
 - Margin foxing throughout.
 - Lower-corner creasing.
 - Minor bottom-edge nicks.

Color & Printing Quality

Colors softened by age; halftones and linework remain crisp.

Structural Notes

Pages remain attached at the fold; documented tears materially affect page integrity but do not cause detachment.

Overall Impression

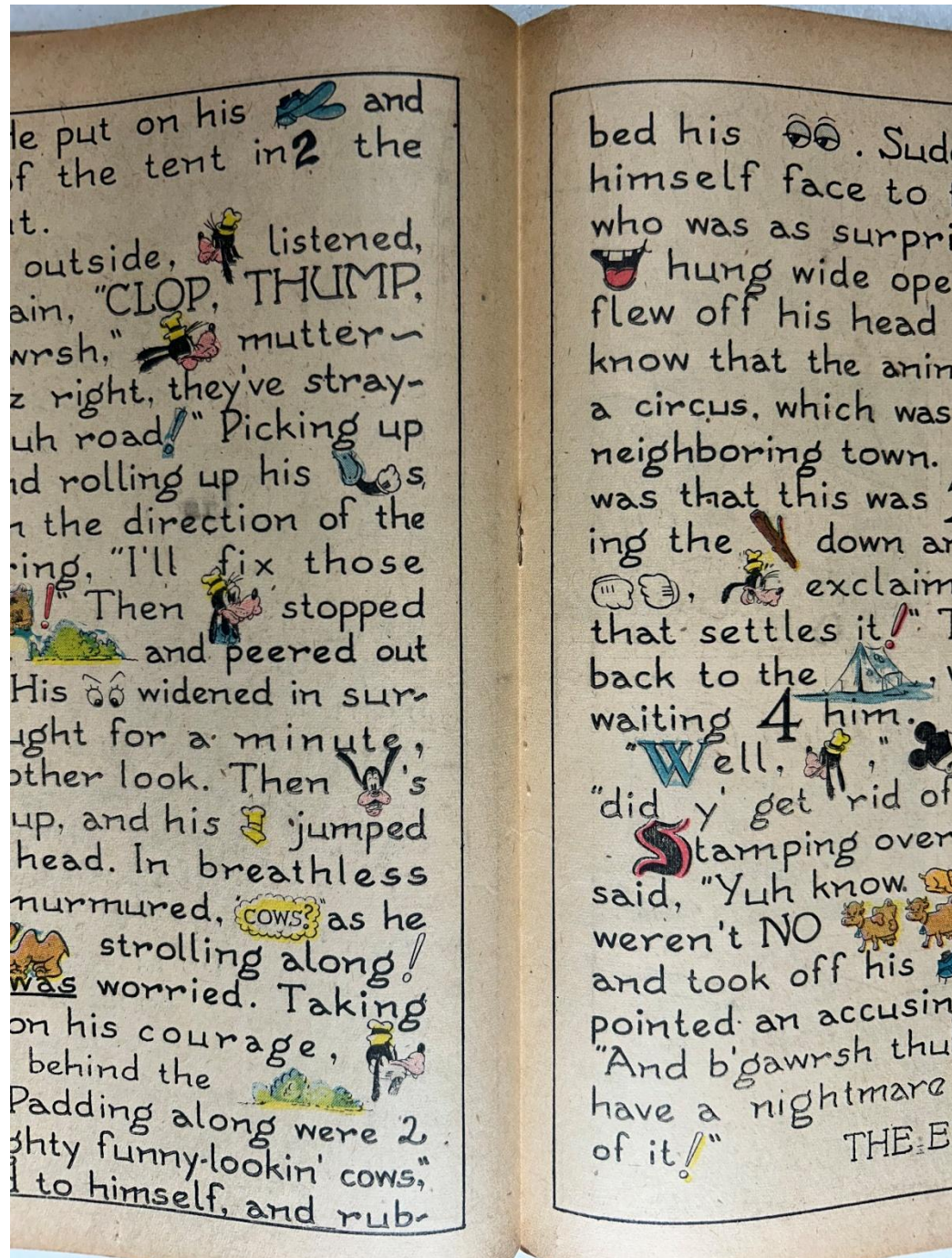
Interior pages are complete but **structurally compromised by multiple measured tears** and advanced aging.

Centerfold — Observations (IMG_1406)

Walt Disney's Comics and Stories — Vol. 5 No. 10 (July 1945)

Photo Condition & Quality

Clear two-page centerfold image showing gutter and bottom edge.



Findings

- **Large lower-center tear measuring approximately 3.0 in (76 mm)** extending upward into text/panel content, with irregular, frayed edges.
- **Secondary vertical tear on the left-hand centerfold page measuring approximately 11 mm**, located near the lower margin.
- Centerfold remains attached along the fold despite tears.

Overall Impression

Centerfold is attached but **significantly torn**, with one major and one minor tear affecting structural integrity.

Spine — Observations (IMG_1407)

Walt Disney's Comics and Stories – Vol. 5 No. 10 (July 1945)

Photo Condition & Quality

Side-profile image clearly shows extensive damage and exposed inner wraps.



Findings

- **Extensive paper loss along the spine**, with original spine stock largely absent.
- **Overlapping tear flaps and exposed inner layers** visible along the full spine height.
- Pronounced forward spine roll.

Overall Impression

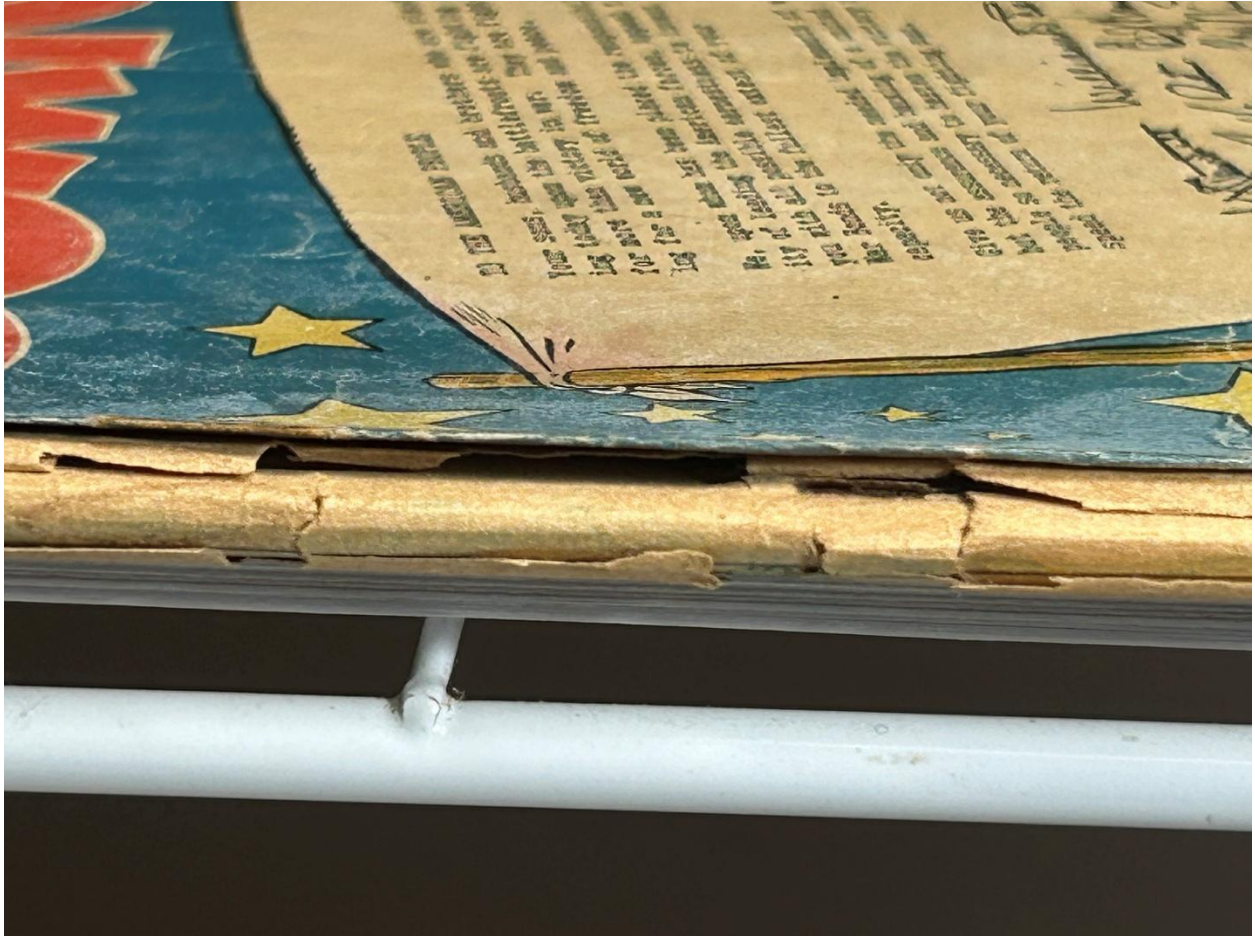
Spine is **severely compromised by tear-out and material loss**, not repair.

Upper Staple — Observations (IMG_1408)

Walt Disney's Comics and Stories – Vol. 5 No. 10 (July 1945)

Photo Condition & Quality

Clear macro image of the upper staple area.



Findings

- **Upper staple not present.**
- **Irregular torn-out staple cavity** with radial tearing and exposed inner layers; no metal visible.

Overall Impression

Structural failure at the upper staple location due to tear-out.

Lower Staple — Observations (IMG_1409)

Walt Disney's Comics and Stories – Vol. 5 No. 10 (July 1945)

Photo Condition & Quality

Close-range view of the lower fold and gutter.



Findings

- **No evidence of a lower staple ever installed** (no puncture, cavity, oxidation, or pull-out pattern).
- Wear consistent with **single-staple manufacture** and fold aging.

Overall Impression

Lower fastener absent by manufacture.

Brittleness Test — Observations (IMG_1410)

Walt Disney's Comics and Stories – Vol. 5 No. 10 (July 1945)

Photo Condition & Quality

Clear macro image showing page-corner flex and fiber texture.



Findings

Page corner flexes stiffly without cracking or flaking.

Overall Impression

Paper shows advanced aging but has not reached full brittleness.